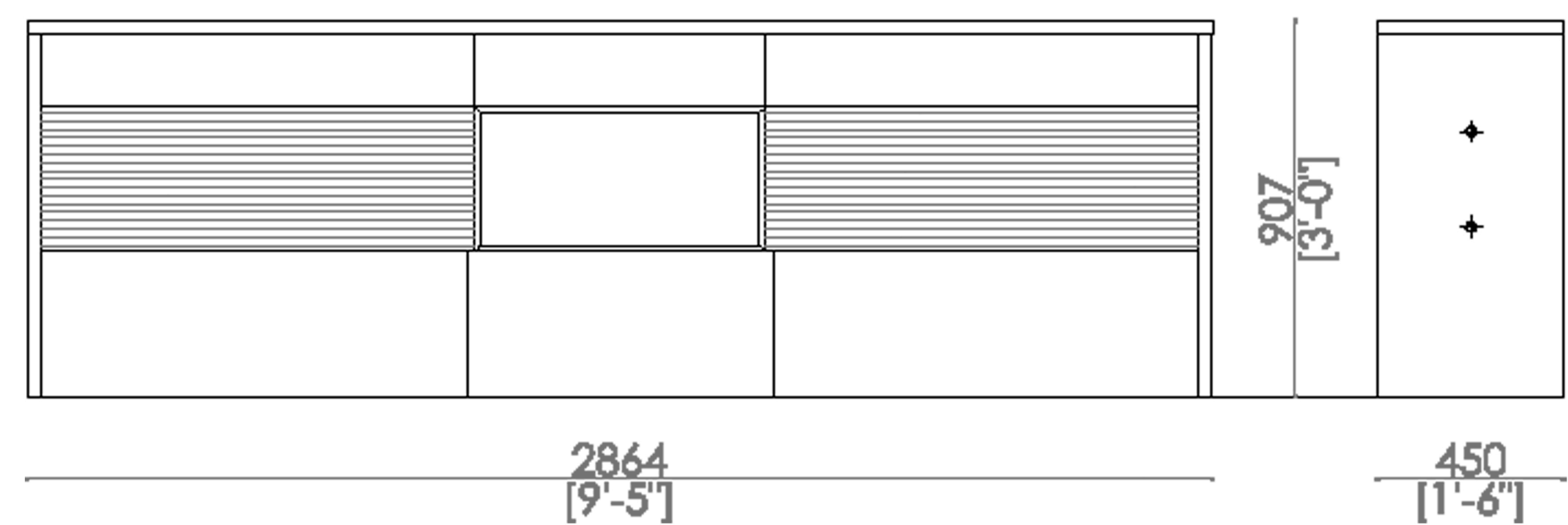
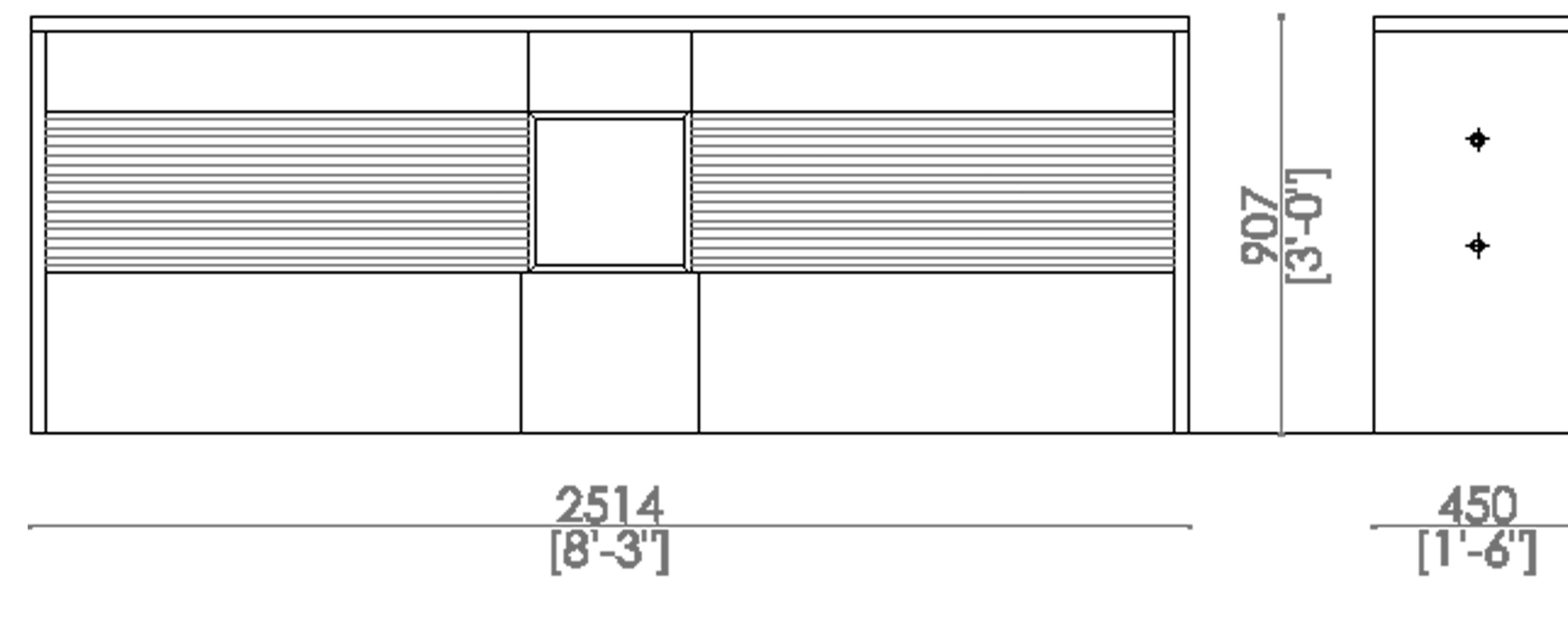
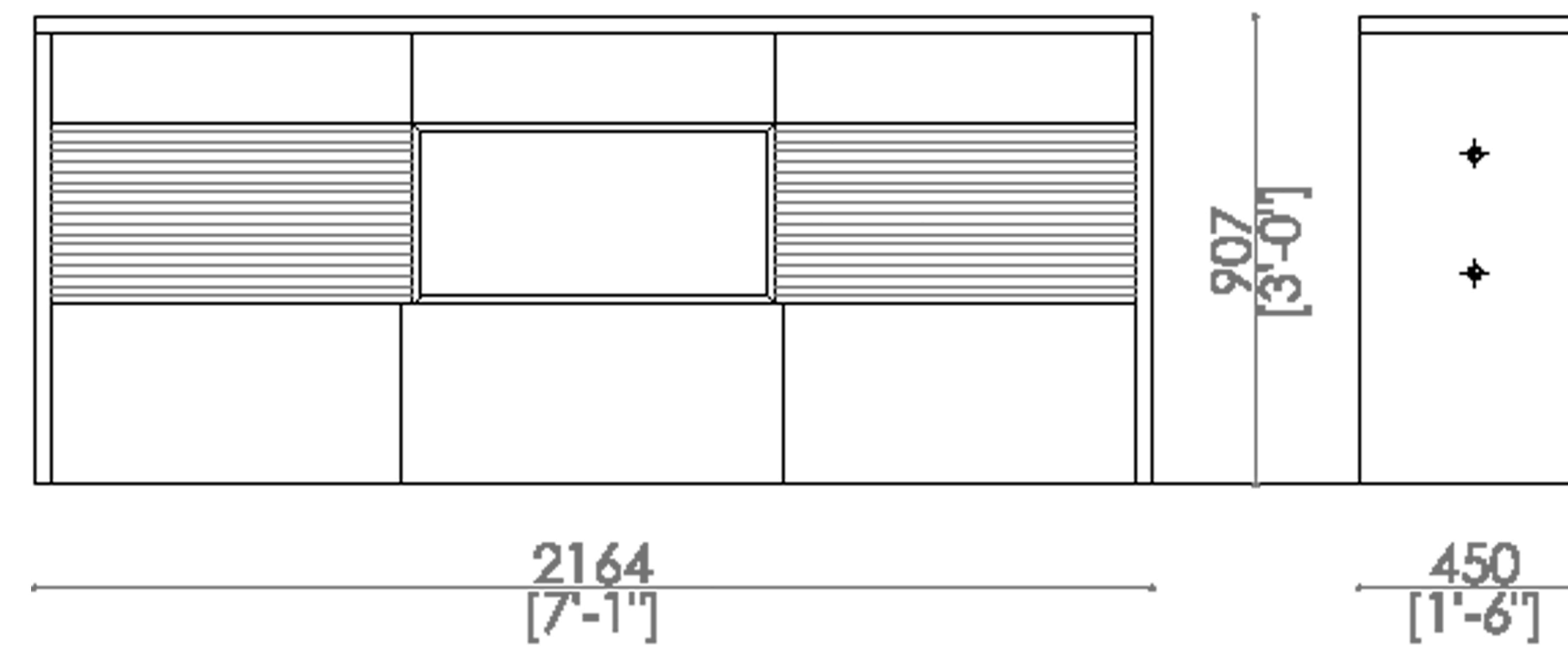
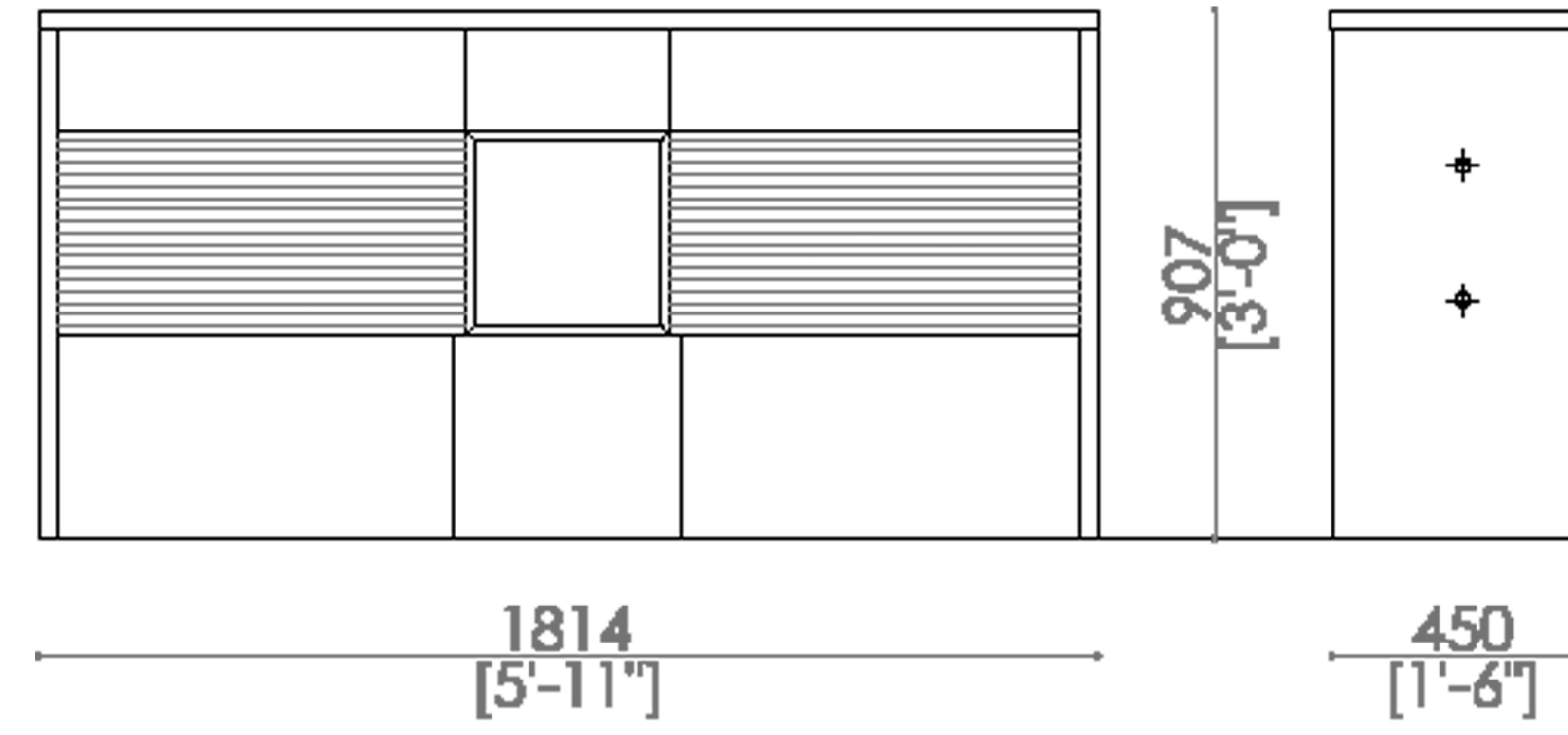


# santambrogio milano

## THE SIDEBOARD



- MADE IN EXTRACLEAR TRANSPARENT GLASS, THICK. 15+15 MM TEMPERED AND LAMINATED
- AVAILABLE IN 200 DIFFERENT COLORS (RAL CODE REFERENCE), TRANSPARENT OR FROSTED
- CABINETS AVAILABLE MADE IN WOOD, METAL OR LEATHER

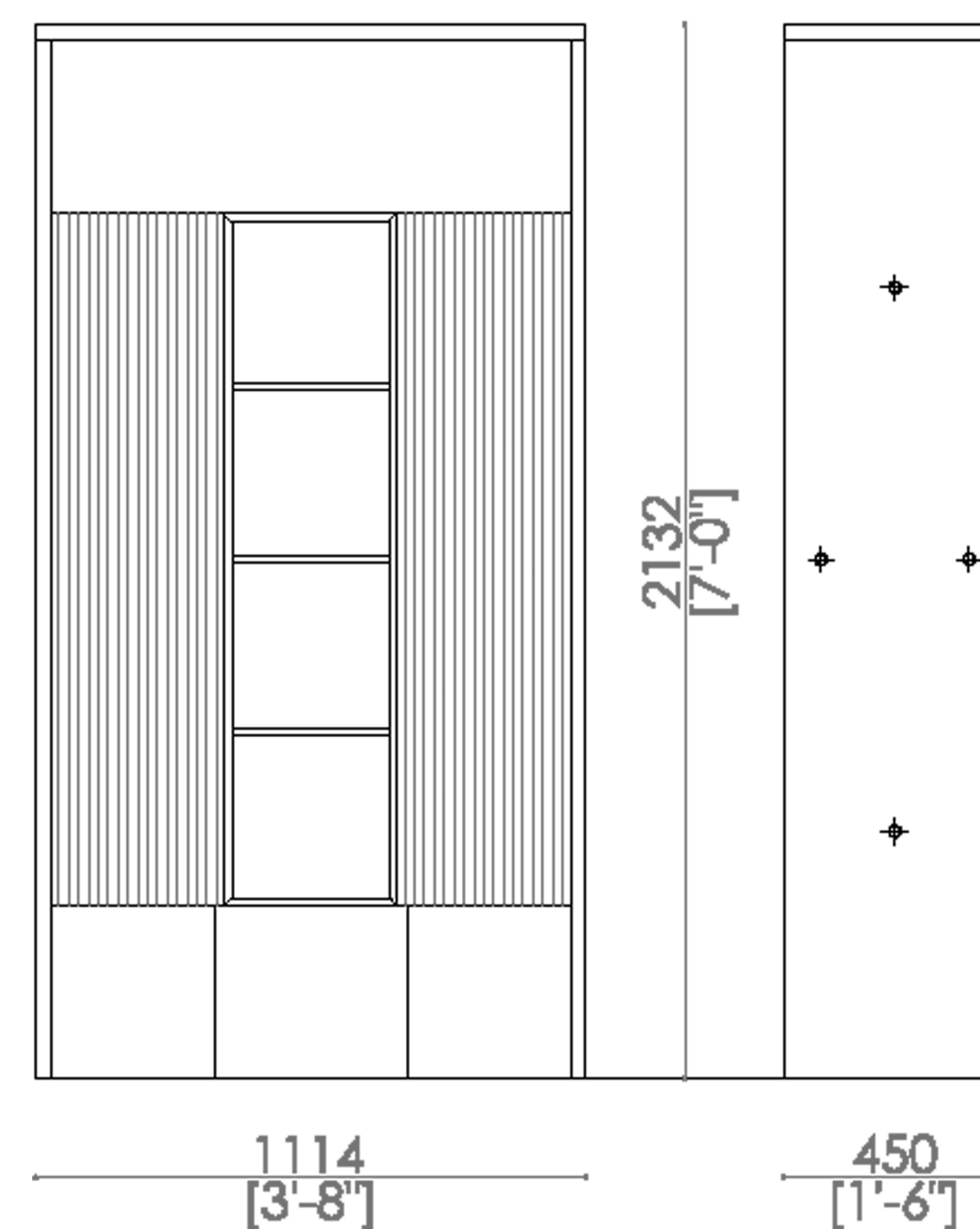
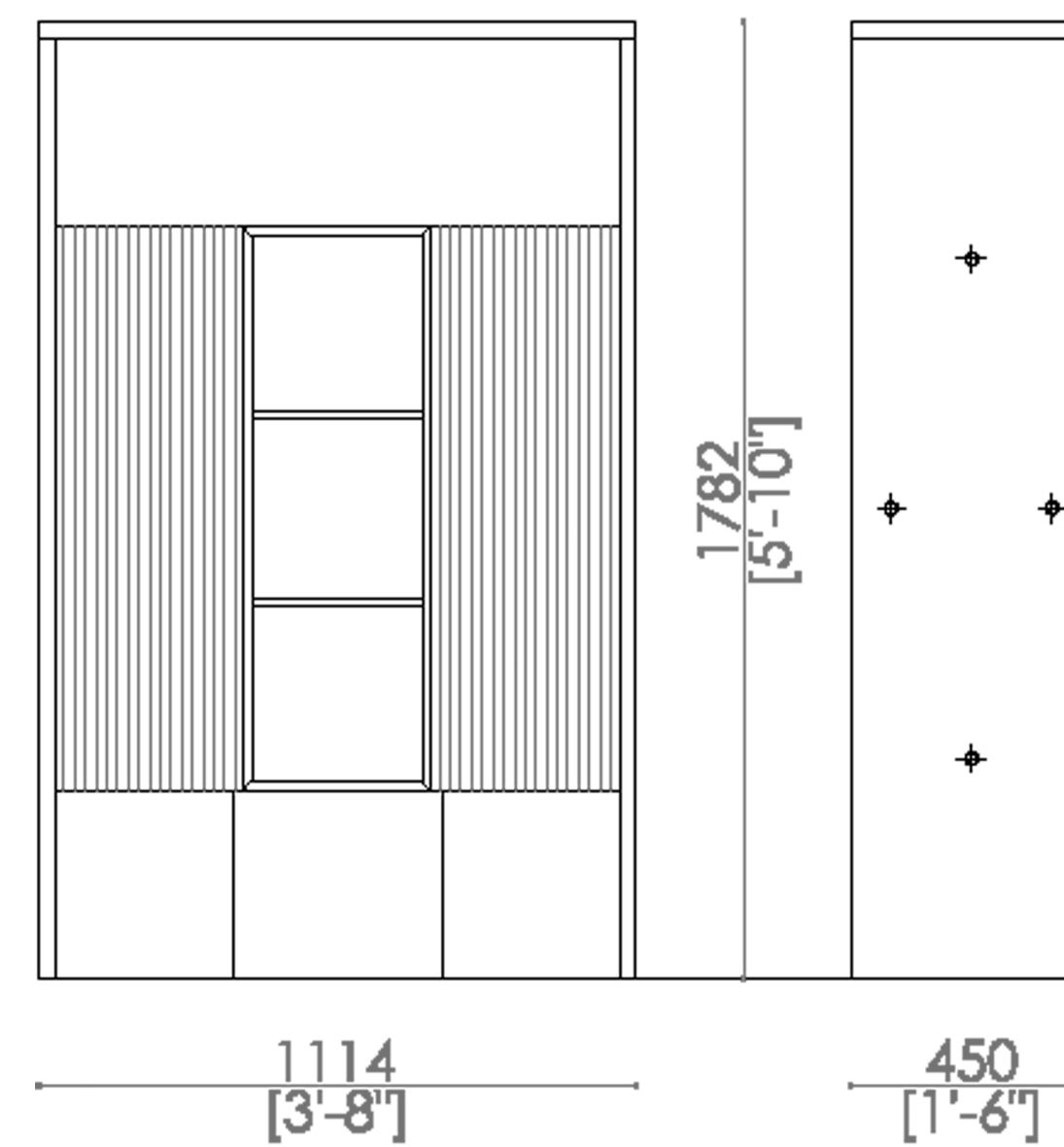
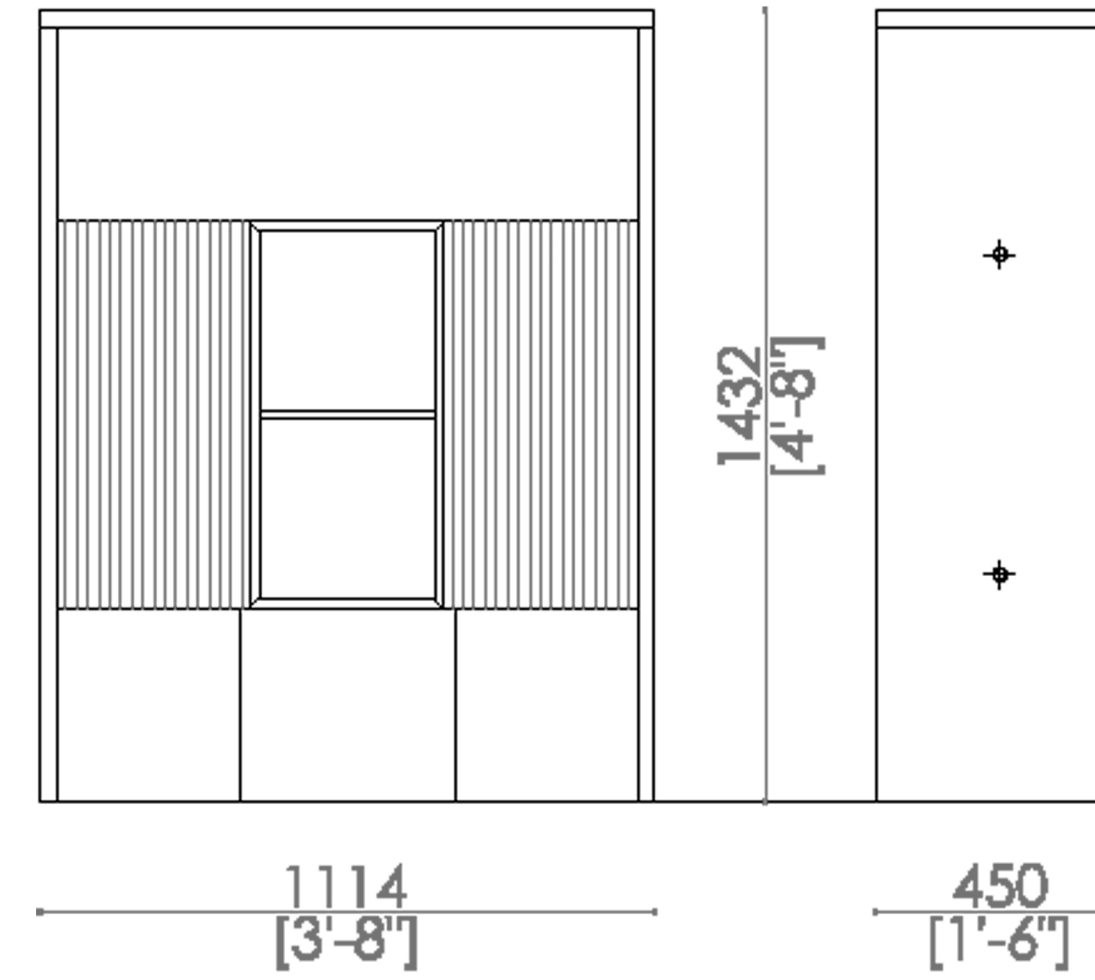


# santambrogio milano

## THE SIDEBOARD



- MADE IN EXTRACLEAR TRANSPARENT GLASS, THICK. 15+15 MM TEMPERED AND LAMINATED
- AVAILABLE IN 200 DIFFERENT COLORS (RAL CODE REFERENCE), TRANSPARENT OR FROSTED
- CABINETS AVAILABLE MADE IN WOOD, METAL OR LEATHER



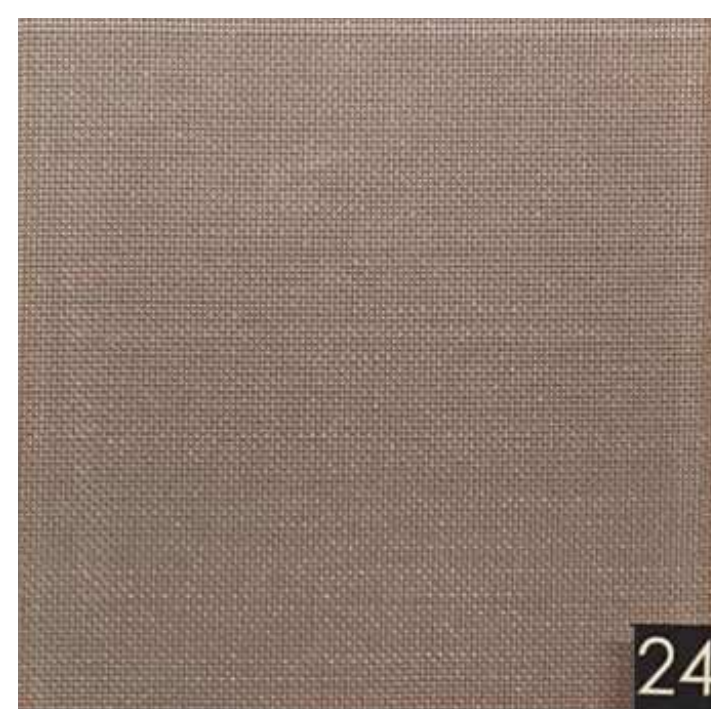
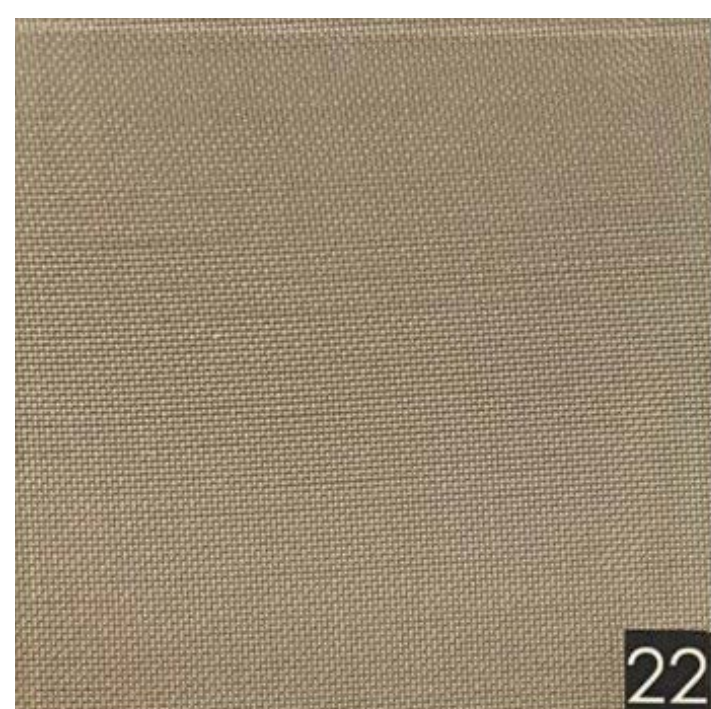
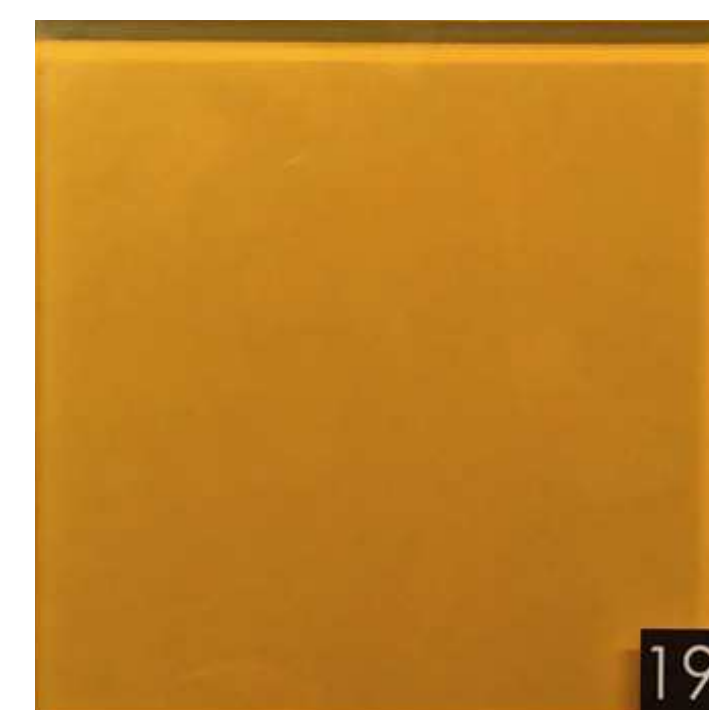
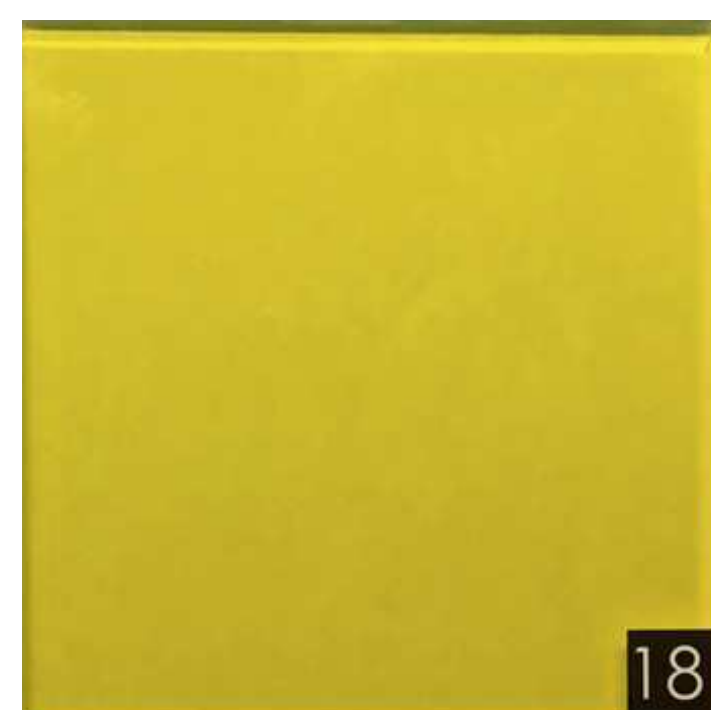
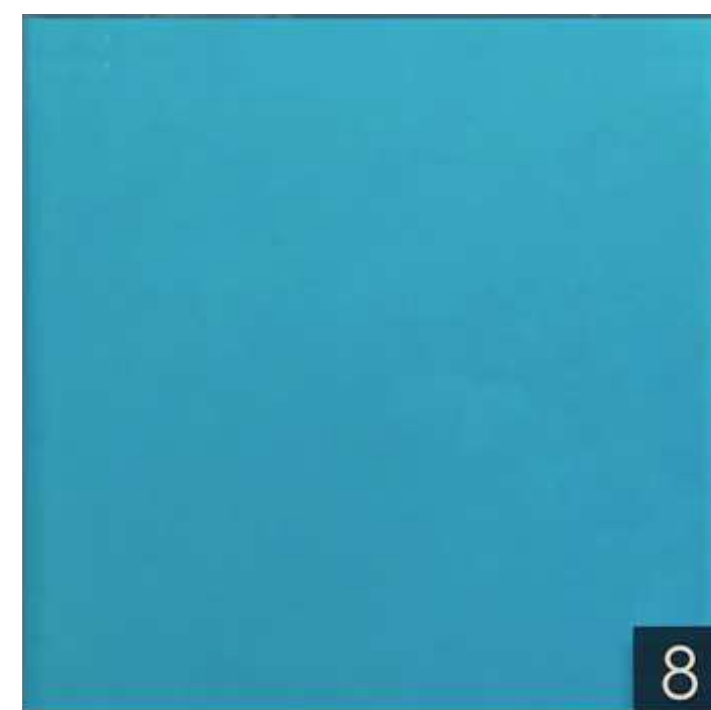
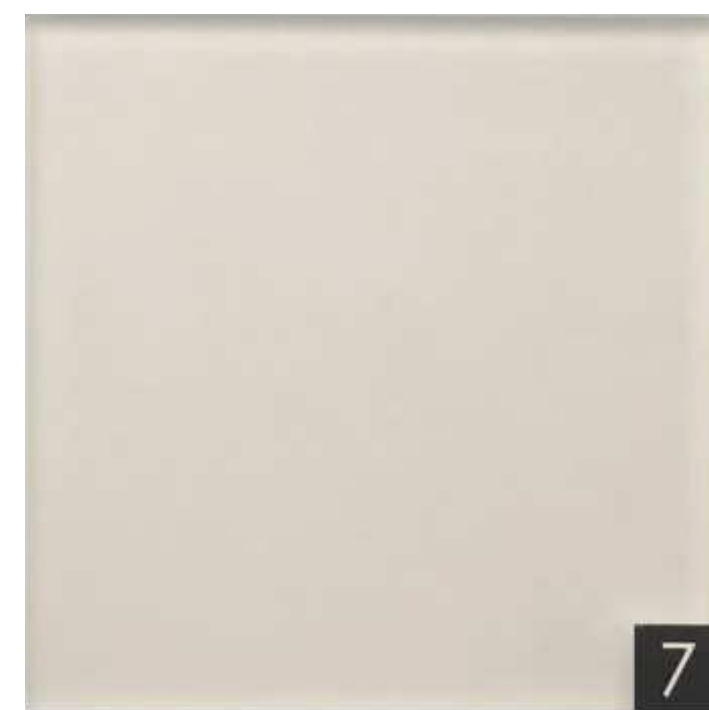
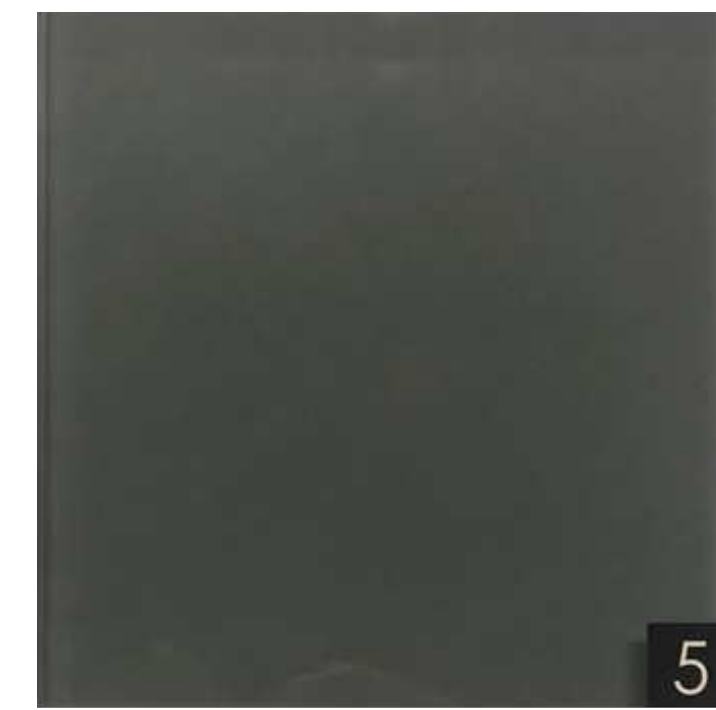
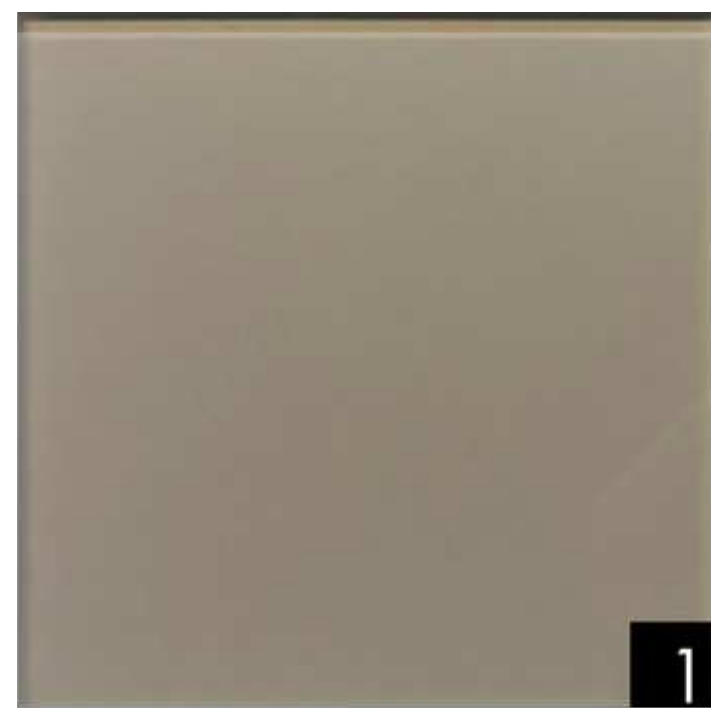
santambrogio|milano

DIGITAL SAMPLE BOX

# santambrogio milano

## DIGITAL SAMPLE BOX

### COLORED GLASS



GOLD middle

SILVER tight

COPPER medium

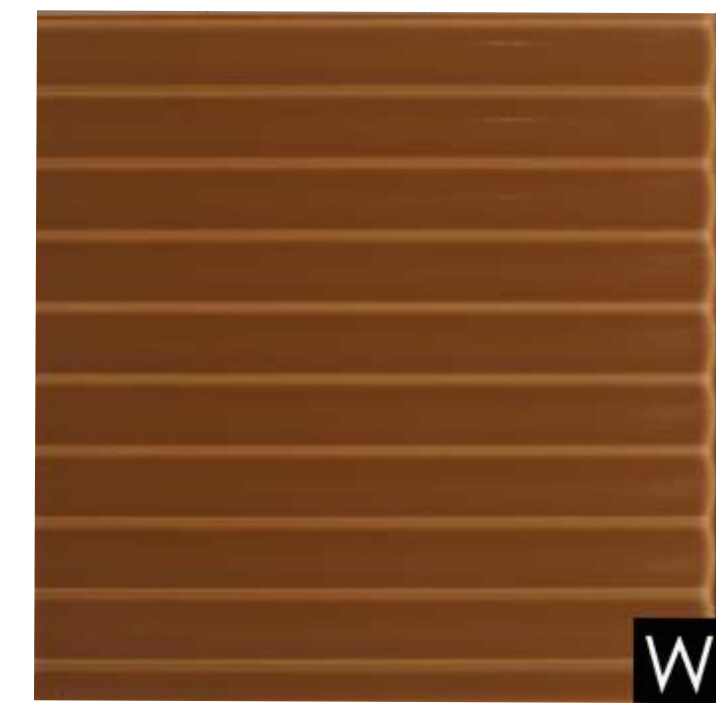
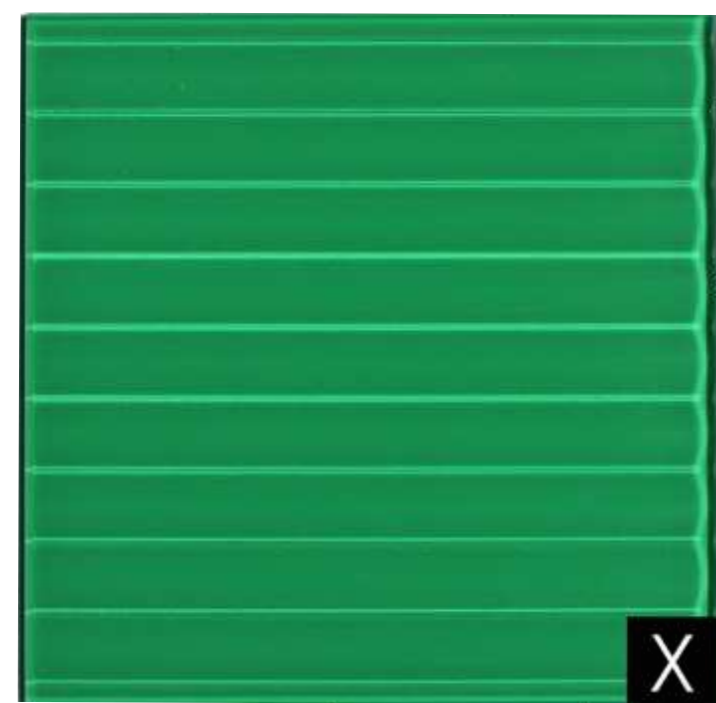
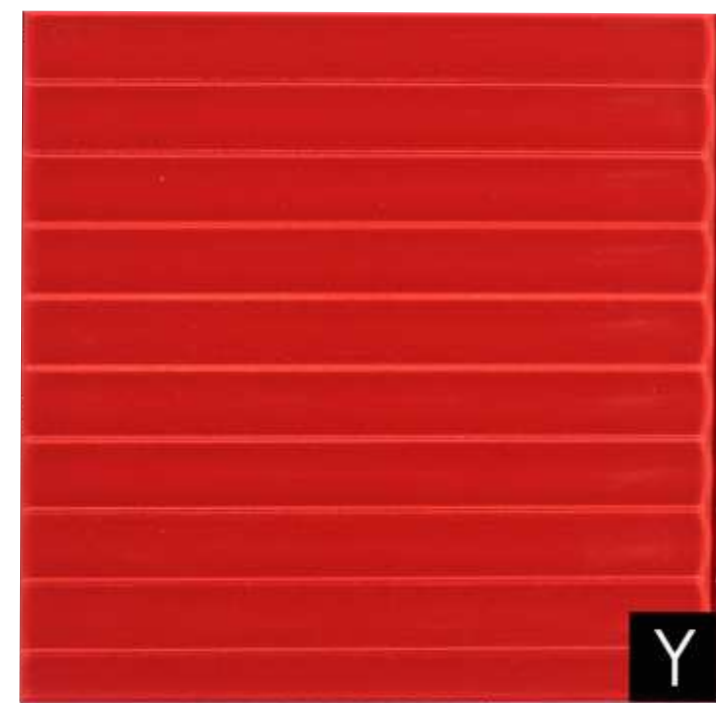
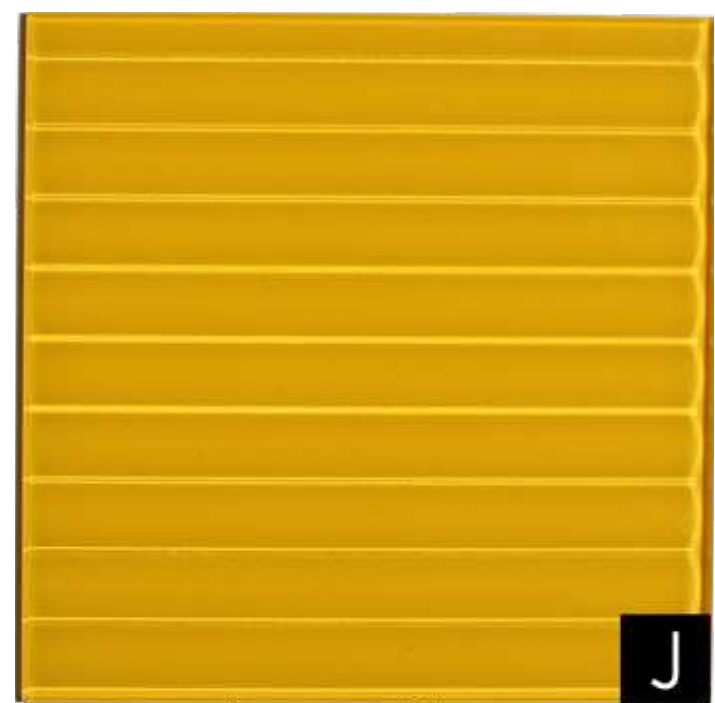
BRONZE medium

SILVER medium

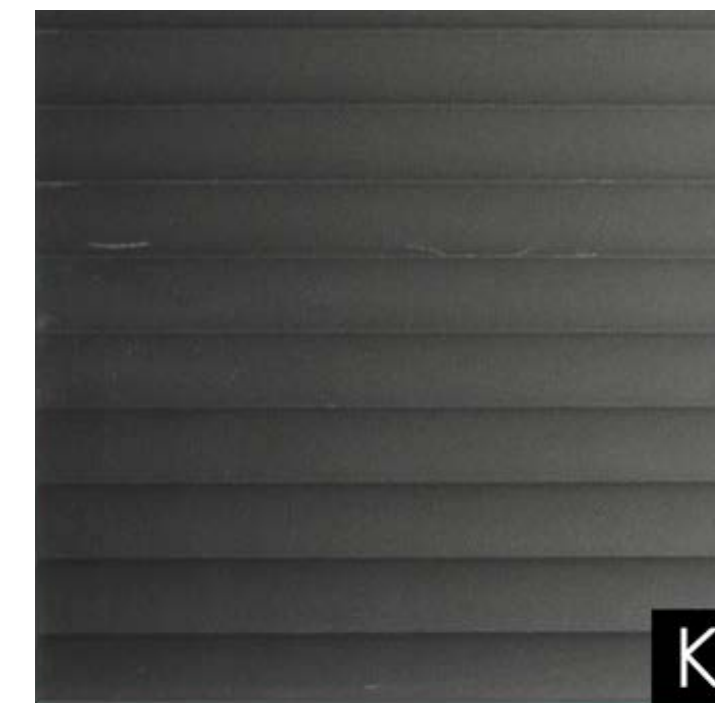
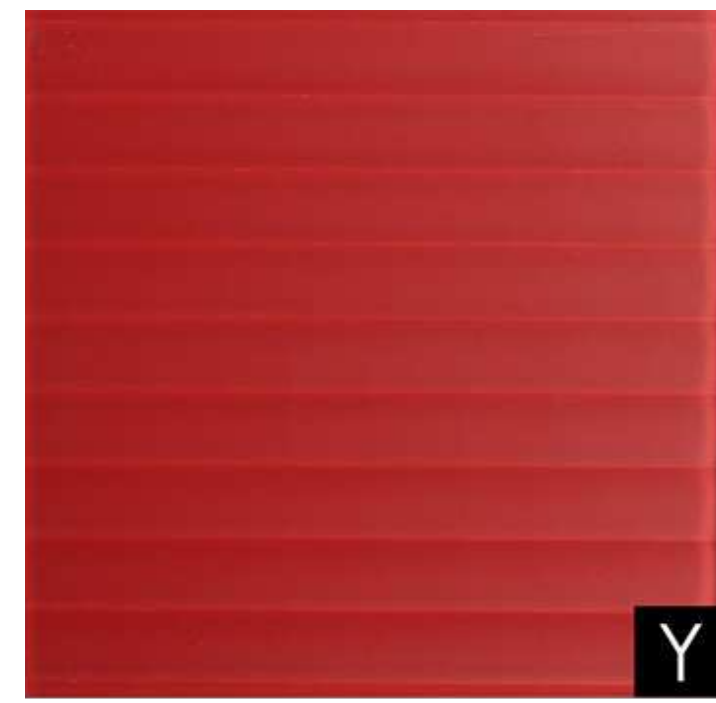
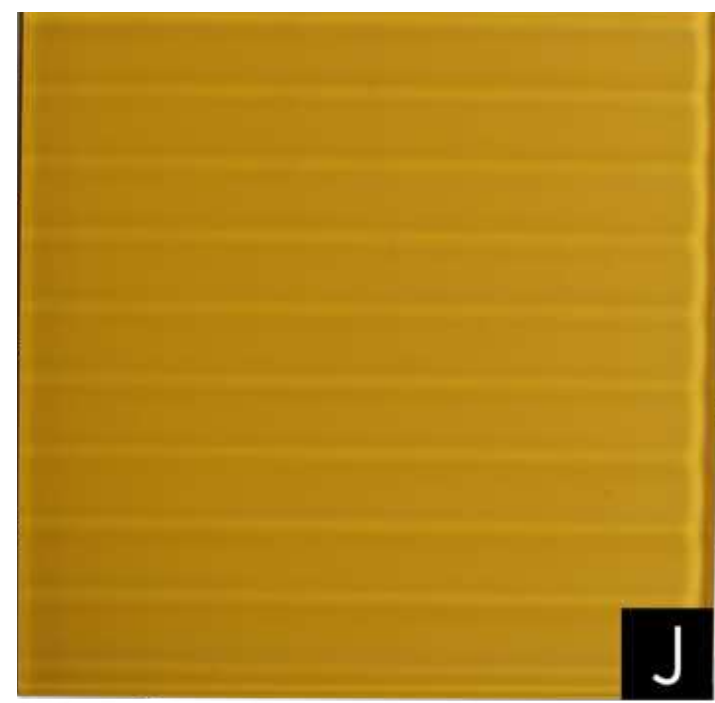
# santambrogio milano

DIGITAL SAMPLE BOX

## GLOSSY WAVY GLASS



## MATT WAVY GLASS



## WOOD



## METAL

